



Co-funded by the
Erasmus+ Programme
of the European Union



How to fill up a water reservoir using fuzzy modelling methods

Diploma Thesis

Daniela Einšpiglová

16. 5. 2019

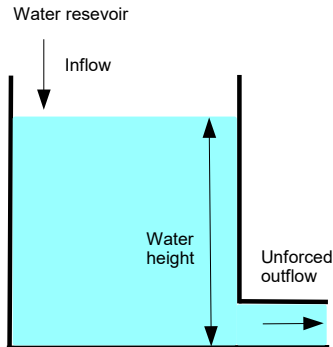


UNIVERSITY OF OSTRAVA
INSTITUTE FOR RESEARCH AND APPLICATIONS OF FUZZY MODELING



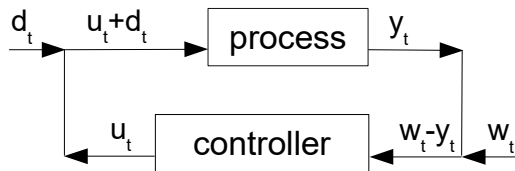
Main tasks of the thesis

- ▶ Devise a controller which controls height of water level
- ▶ 5 fuzzy modelling approaches and their comparison
- ▶ Application of theoretical knowledge of fuzzy sets, logic and modelling
- ▶ Individual work on real-life problem using LFLC and LFLCSim software



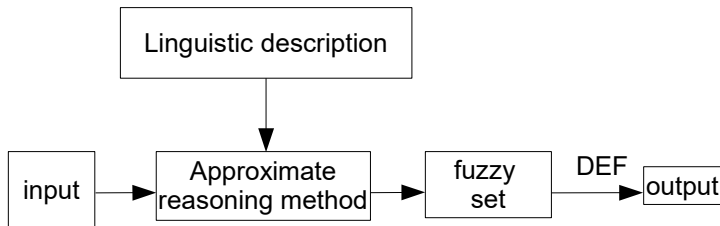
Control system

- ▶ The goal is to maintain the quantity of interest on desired level under various circumstances
- ▶ Controller is a device that automatically implements such control
- ▶ Usually the system is a closed feedback loop control

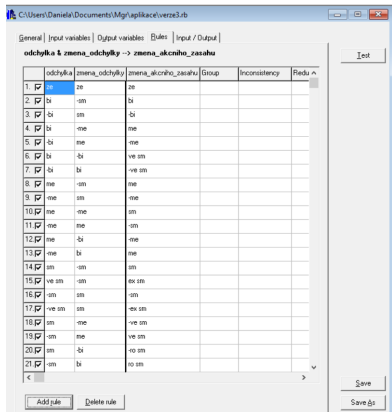
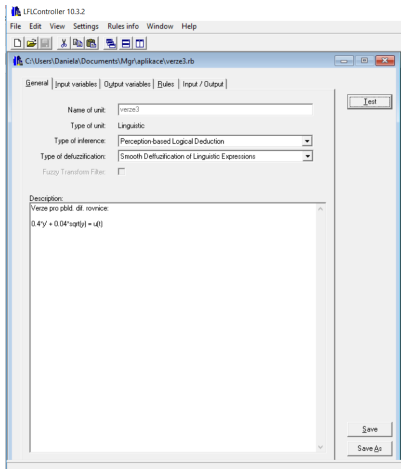


Fuzzy control

- ▶ Based on the knowledge of the control mechanism not on the mathematical model of the process
- ▶ Fuzzy controller “replaces the person in control”
- ▶ Mathematical model of natural human thinking
- ▶ LFLC software



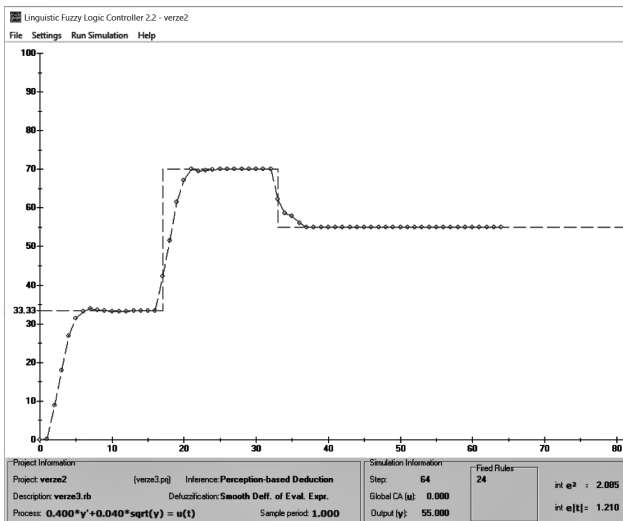
Fuzzy control



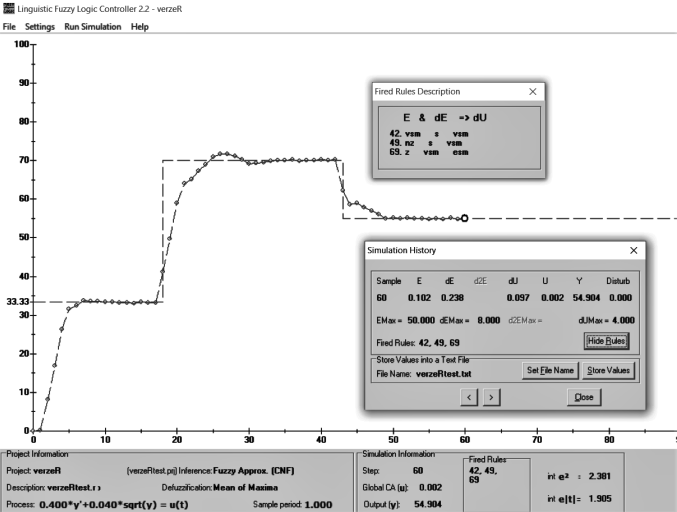
Simulation

- ▶ Simulation of the control was made by LFLCSim software
- ▶ LFLCSim is connected to LFLC where the variables and rules are implemented
- ▶ Output of simulation is an animation of development of the process

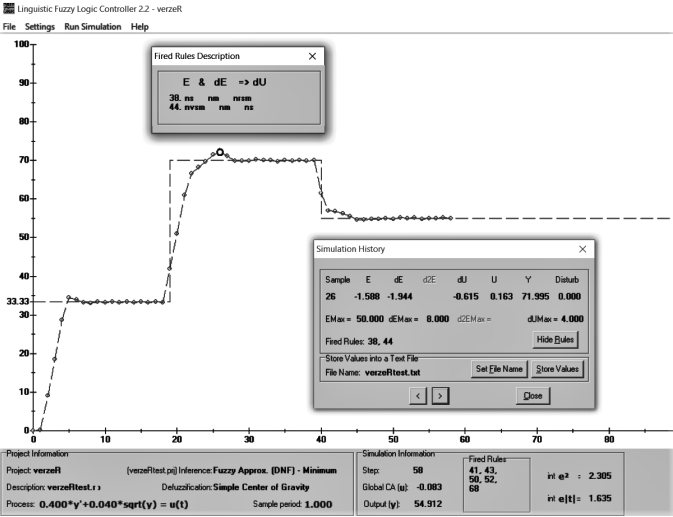
Results



Results



Results



Thank you for your attention.